



2720 N County Road 800 E
 Selma, IN 47383
 (765) 468-6911
 (866) 668-2763
 www.BotkinTrophies.com

O t h e r G e n e r a l T r o p h i e s



M3-A	22"	\$18.50	3PWA	28"	\$24.00	M2P	21"	\$19.50
M3-B	24"	\$19.00	3PWB	31"	\$25.50			
M3-C	26"	\$19.50	3PWC	34"	\$27.00			



GBDR 11" \$13.00



G5H 25" \$26.00



GBDM 11" \$12.00



CF-12 12"x9" \$22.00
CF-13 13½"x10" \$24.00



IC-7 7"x9" \$16.50
IC-9 9"x12" \$18.00
IC-11 11"x13" \$20.00



IN-4 4"x7" \$9.00
IN-6 6"x10" \$13.00
IN-8 8"x12" \$18.00



V-10 10"x8" \$11.00
V-12 12"x9" \$12.75
V-13 13½"x10" \$14.50



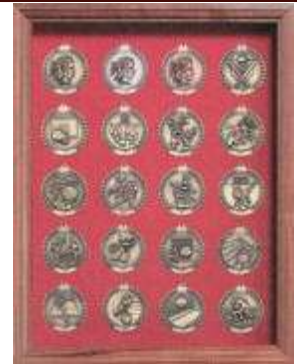
D-4 4"x6" \$7.25
D-5 5"x7" \$8.00



PIC-A 7"x9" \$9.00
PIC-B 8"x10" \$10.75
PIC-C 9"x12" \$12.25



MH-7	7"x9"	\$10.00	12PL		\$28.00	STAR7	7"x9"	\$9.00
MH-8	8"x10"	\$11.25	18PL		\$33.00			
MH-9	9"x12"	\$13.00	24PL		\$42.00			



SLI	13"x10.5"	\$14.00	CON	15"x7"	\$46.00	M-100 M-500	1 3/4" 2 3/4"	\$1.75 \$2.50 Engraving 50¢ per plate
-----	-----------	---------	-----	--------	---------	----------------	------------------	---



Plastic pieces vary in size and price.
Please call for pricing.

T o p p e r s



B-2	5"	\$2.25	BCr	7"	\$3.95	JCr	7"	\$4.90
-----	----	--------	-----	----	--------	-----	----	--------



BMED	5"	\$2.95	B5S	6"	\$3.95	RX-SOFT	6"	\$6.95
						RX-BASE	5"	\$6.15



			B-SOFT	5"	\$4.25			
			B-BASE	4"	\$4.00			